



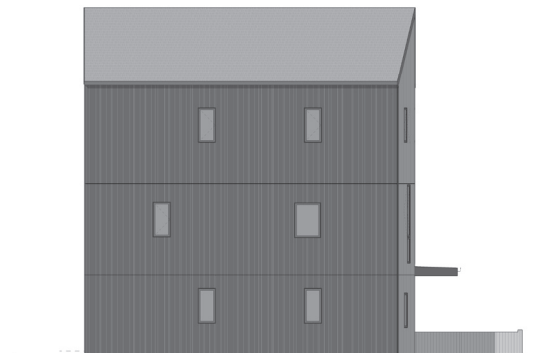
\kuhl\ Swedish/Danish: Fun,  
Nice, Enjoyable, Amusing.

## KUL 6

- + Modern Scandinavian design with quality custom finishes
- + Open living spaces w/ large windows and abundant natural light
- + 3 bed, 2.5 bath w/ a mud room + den/flex space
- + Covered patio, 2nd story deck, 2 car garage w/ additional covered parking and solar



FRONT ELEVATION

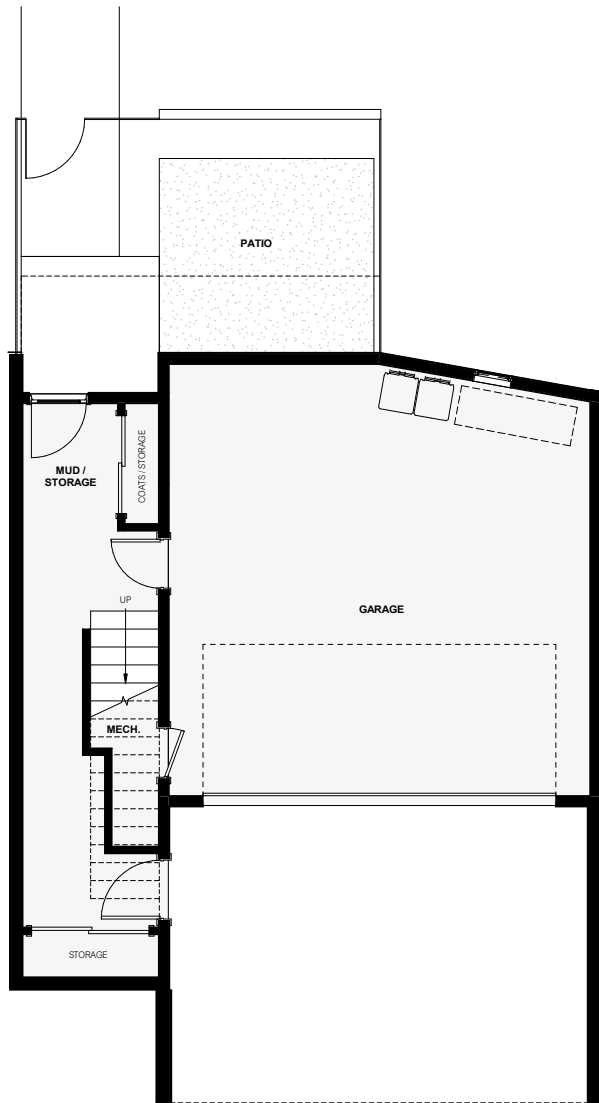


SIDE ELEVATION

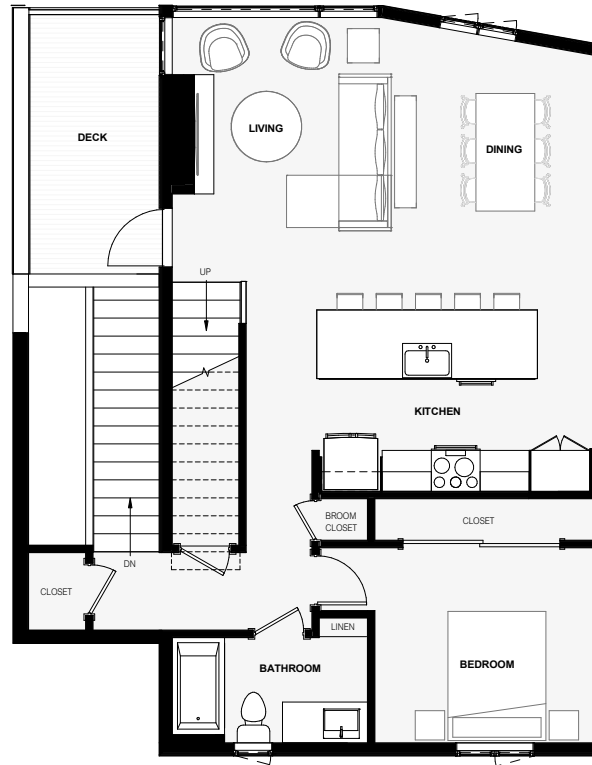
**GranCieloBZN.com**



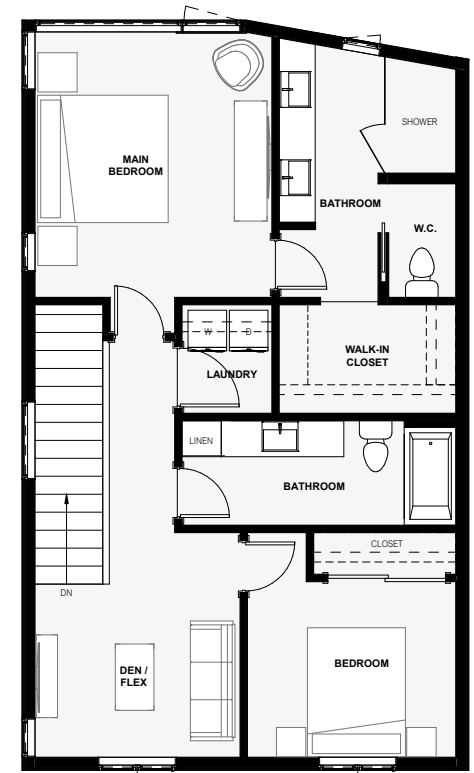
**GRAN CIELO**



MAIN FLOOR



SECOND FLOOR



THIRD FLOOR

## KUL 6

2,070 SF | 3 bed | 3 bathrooms

Please note actual floor plans and finishes may differ slightly when constructed.