

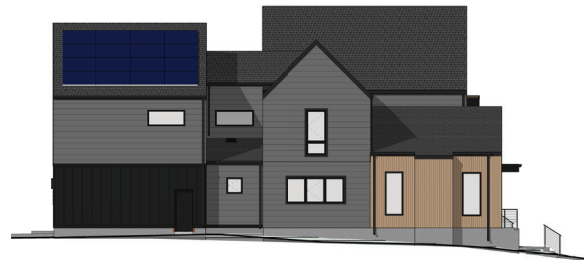


Actual exterior may change depending on specific building location

*\gla-deh\ Norwegian: To happily
look forward to something.*

GLEDE CP-3Ab

- + 4 bed | 3.5 bath | 3,601 sqft
- + 1st floor primary suite
- + Spacious kitchen with large island and pantry
- + Laundry & mud room off of garage entry
- + 3 car garage w/ apartment above



SIDE ELEVATION

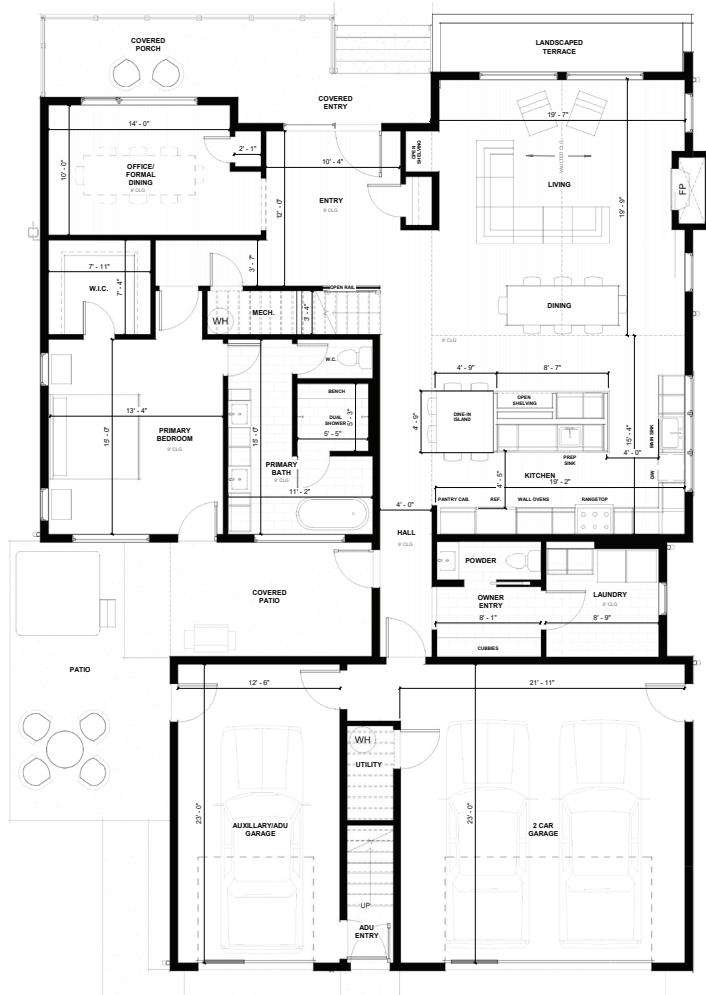


REAR ELEVATION

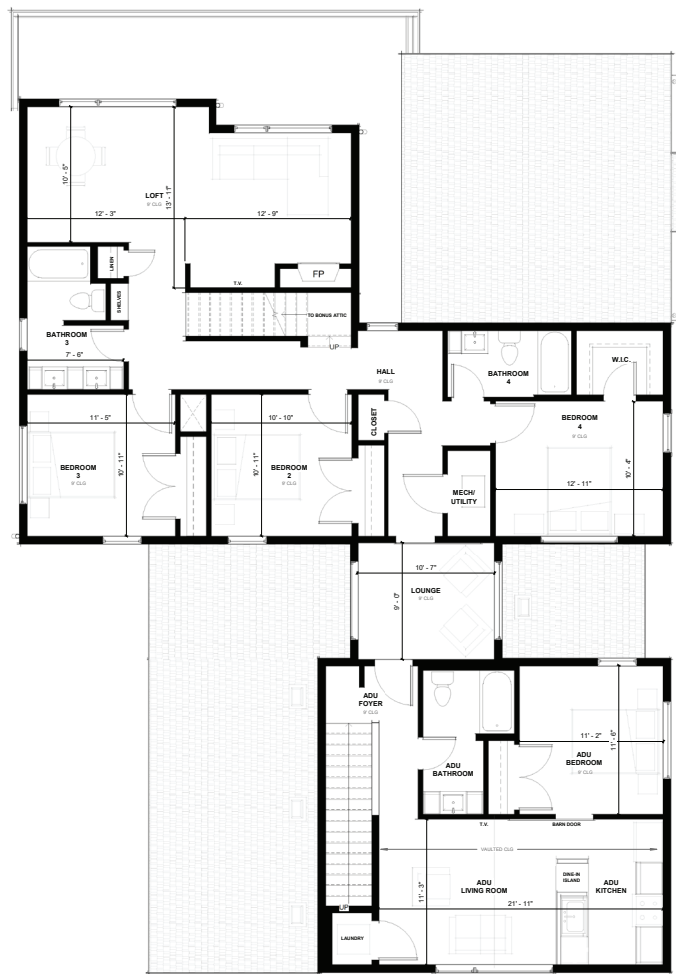
GranCieloBZN.com



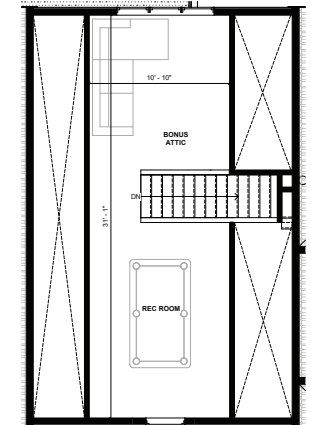
GRAN CIELO



MAIN FLOOR



SECOND FLOOR



ATTIC

GLEDE CP-3Ab

3,601 SF | 4 bedrooms | 3.5 bathrooms
ADU | 592 SF, 1 bedroom, 1 bathroom